



GMT MONTHLY MEMBERSHIP PROGRESS REPORT

Results as of: 5/31/2020

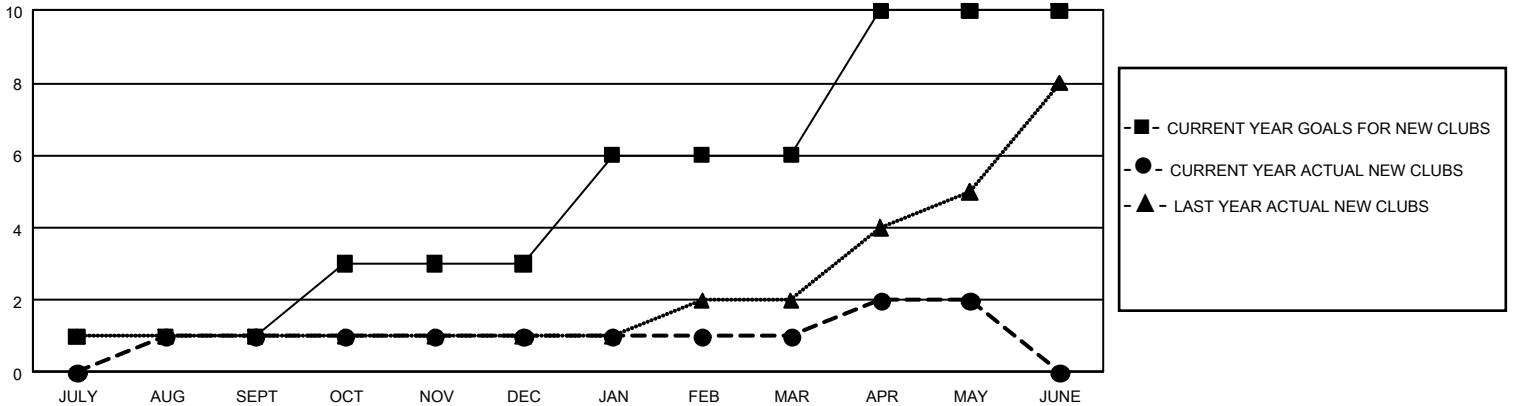
GMT Constitutional Area 1, Group L

GMT: OPEN

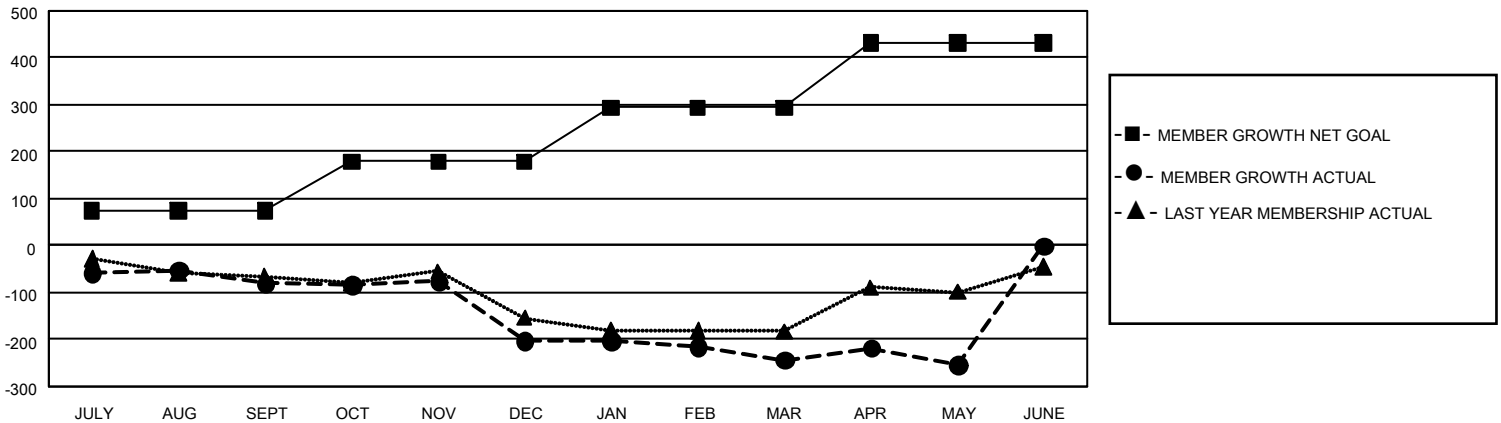
REPORT DOES NOT INCLUDE CLUBS IN UNDISTRICTED AREAS.

Clubs				Members			
RESULTS FOR 2019-2020				RESULTS FOR 2019-2020			
QUARTER	NEW CLUB GOAL	NEW CLUBS	DROPPED CLUBS	QUARTER	MEMBER GROWTH NET GOAL	MEMBER GROWTH ACTUAL	DROPPED MEMBERS ACTUAL (including transfers)
JULY/AUG/SEPT	3	1	1	JULY/AUG/SEPT	219	112	182
OCT/NOV/DEC	6	0	2	OCT/NOV/DEC	318	161	275
JAN/FEB/MAR	9	0	1	JAN/FEB/MAR	345	120	150
APR/MAY/JUNE	12	1	0	APR/MAY/JUNE	414	60	69

GOALS AND ACTUAL NEW CLUBS CUMULATIVE



GOALS AND ACTUAL MEMBERS CUMULATIVE



DROPPED CLUBS: 4	122 CLUBS OF 231 ADDED 1 OR MORE NEW MEMBERS	<u>GENDER DISTRIBUTION</u> MALE 3,254 (49.69%) FEMALE 3,294 (50.31%)
<u>DROPPED MEMBERS</u> DECEASED 84 CLUB CANCELLED 26 OTHER 566 <hr/> TOTAL 676	CLICK HERE FOR CUMULATIVE MEMBERSHIP DATA	TOTAL FAMILY UNIT MEMBERS 874 FAMILY MEMBERS PAYING HALF DUES 462